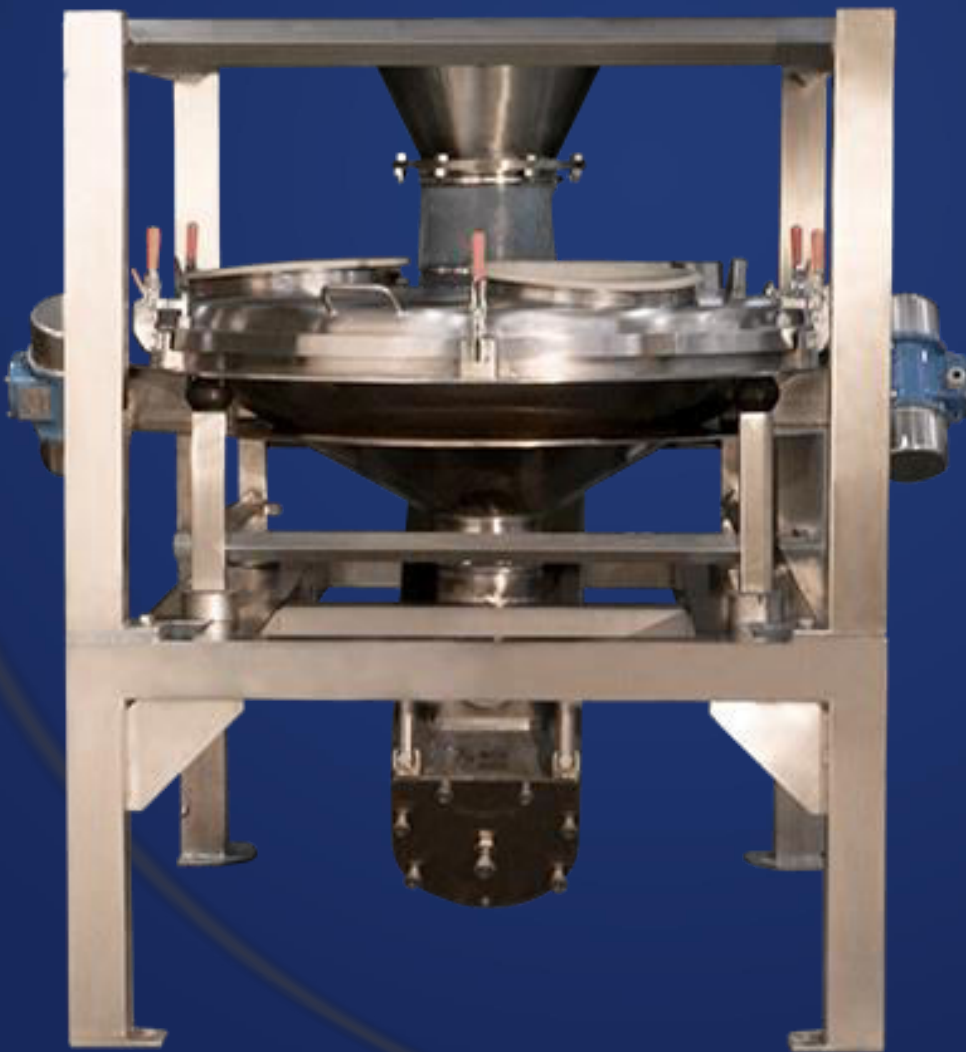


Industrial Safety Sieve System



PRODUCT INFORMATION



The Industrial Safety Sieve Systems protects facilities from contamination and damage. Large particles are trapped by the safety sieve and are not transferred to the next material flow. The safety sieve is separating the agglomerates so that the next material flow runs smoothly.

APPLICATIONS

- Food
- Animal feed
- Fertilizers
- Chemicals
- Pharmaceuticals
- Building materials

DESCRIPTION

The vibration sieve system it is considering high hygiene standards and includes dust exproof engines. The construction of safety sieve systems is performed in compliance with customer specific requirements.

CERTIFICATIONS

Isimsan manufactures according to the following International directives and regulations:

- CE 2006/42/EC (machinery directive)
- CE 2014/29/EU (pressure vessel directive)
- CE 2014/68/EU (pressure vessel directive)
- ATEX product line 2014/34/EU
- EHEDG hygiene guidelines
- GMP (Good Manufacturing Practices)
- FDA (U.S. Food and Drug Administration)
- EAC (EuroAsia Conformity)

Isimsan is certified in terms of quality management (ISO 9001) environmental standards (ISO 14001), welding technology and supervision (ISO 3834 & 14731) and control technology (2006/42/EC).





CONSTRUCTION DETAILS

FEATURES

Separating parts: top cover, body, sieve, seals, clamps, engines

Material: stainless steel 1.4301 (other upon request)

Surface: brushed, polished, mirror polished

Body size: 1.480 x 1.700 x 580 mm (other upon request)

Screen form: circle

Screen area: 1,2 m² (bigger upon request)

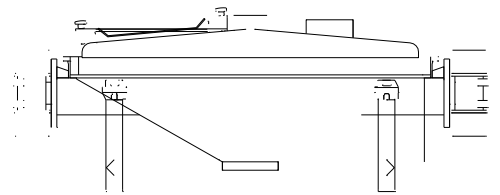
Screen mesh: 0,15 - 5,35 mm

Number of screens: 1

Vibrating machine: 2 x unit at the side

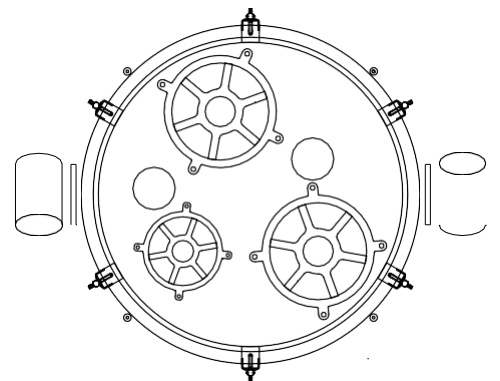
kW: 0,28

Hertz: 50



OPTIONS

- Emergency sensors
- PLC systems (Programmable Logic Controller)
- Remote controls
- Frames and platforms
- Pneumatic valves
- Magnet boxes
- Dust sections
- Maintenance holes



INDUSTRIAL SAFETY SIEVES



The table below refers to the standard performance of Safety Sieves.

Material: stainless steel 1.4301

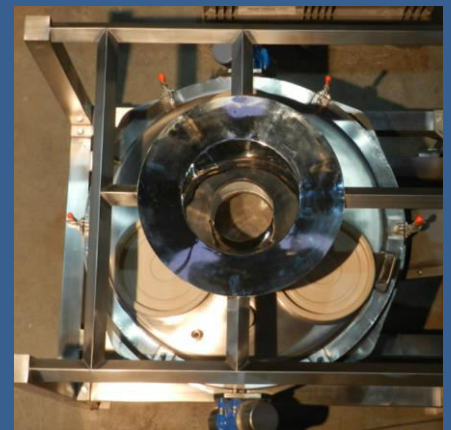
Surface: brushed (outside),
polished (inside)

Screen form: circle

| Screen Size | Diameter Screen | Weight | Vibration Machines | Drive |
|----------------|-----------------|--------|--------------------|-------|
| m ² | mm | kg | number | kW |
| 1,2 | 1.200 | 220 | 2 | 0,28 |

Isimsan is designing safety sieves individually according to customer specifications. This includes the choice of material, of drive models, of feeding and discharging systems and as well of many other equipments too.

Further informations you can find in our brochure or come back to us. We are there for you.



CERTIFICATIONS

Isimsan manufactures according to the following International directives and regulations:

- CE 2006/42/EC (Machinery Directive)
- CE 2014/29/EU (Pressure Vessel Directive)
- CE 2014/68/EU (Pressure Vessel Directive)
- ATEX product line 2014/34/EU
- EHEDG (Hygiene Guidelines)
- GMP (Good Manufacturing Practices)
- FDA (U.S. Food and Drug Administration)
- EAC (EuroAsia Comformity)

Isimsan is certified in terms of quality management (ISO 9001) environmental standards (ISO 14001), welding technology and supervision (ISO 3834 & 14731) and control technology (2006/42/EC).

OUR GLOBAL SALES REPRESENTATIVES

SUPPORT YOU ALL OVER THE WORLD.

E-MAIL: sales@isimsan.com.tr

PHONE: +90 232 8770582